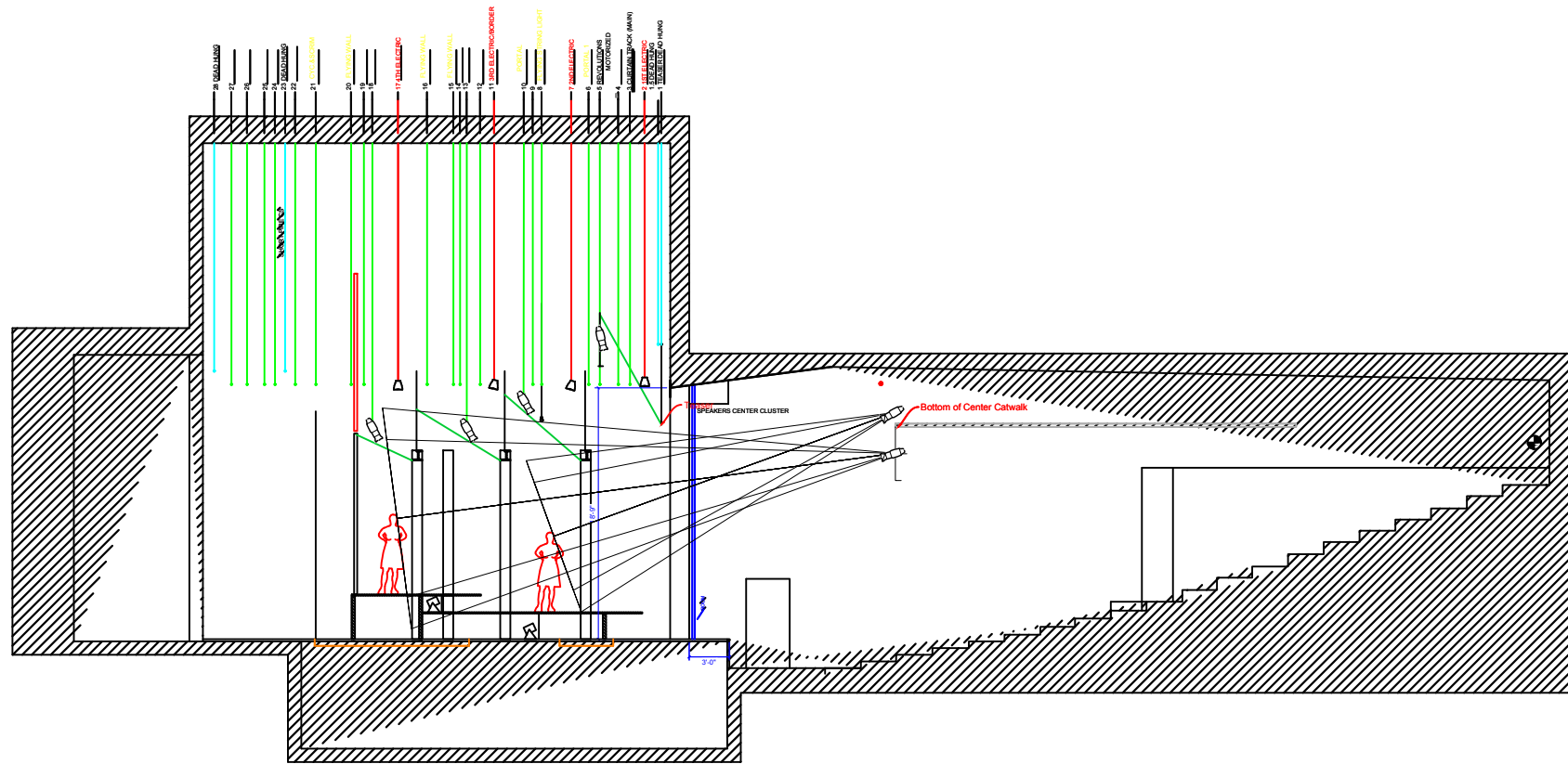
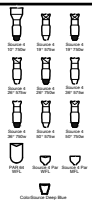


CFR
 CONSULTANTS
 1209 Hay St.
 Fayetteville, NC
 28305



Key



Legend



Notes

1. All lighting fixtures shall be new unless otherwise noted.
 2. All lighting fixtures shall be dimmable.
 3. All lighting fixtures shall be rated for the ambient temperature of the theater.
 4. All lighting fixtures shall be rated for the maximum voltage of the theater.
 5. All lighting fixtures shall be rated for the maximum current of the theater.

Bill Walsh, Contact Information
 910-336-0275
 837 Peoples Blvd. S.E.
 Fayetteville, NC 27305

Director: Brian Haring Brooks
 Production: The Color Purple
 Production Office: Fayetteville, NC



Elton Performance Arts
 Fayetteville

The Color Purple

SCALE: Not to Scale

Lighting Section

Date: 3/12/22

Plate No.

2 of 2